

Infant Development
Association Annual Policy
Update
February 1, 2019

» Sharon DeRego, Part C Coordinator

Emily Woolford, Chief
Early Start & Health Services Section

Department of Developmental Services



Agenda

- ▶ General Updates
- ▶ Regulation Packages
- ▶ State Systemic Improvement Plan (SSIP)

General Updates

- ▶ Annual Performance Report – February 1st
- ▶ State Systemic Improvement Plan Report – April 1st
- ▶ Part C Grant Application – May 3rd
- ▶ Early Start Partners Symposium
 - May 23–24, San Diego, CA
- ▶ DDS Budget
 - <https://www.dds.ca.gov/Budget/Home.cfm>
- ▶ Two Upcoming Online Courses: Provider Tips and Transition – Summer 2019
- ▶ Governor Newsom Appoints Two Child Development Experts
 - <https://www.gov.ca.gov/2019/01/21/>

Regulation Packages

- Early Intervention Services
 - Title 17 regulation changes reflect federal regulation changes
 - Meaning of Words section
- Speech Language Pathology Assistants (SLPA)
 - Regional center vendor

Public comment period ended December 5th

➤ <https://www.dds.ca.gov/ProposedRegs/Home.cfm>

4

SSIP

- ▶ The SSIP is a required indicator of the Part C Annual Performance Report (APR)
- ▶ The SSIP was added to the APR to help states focus on analyzing their current system and redesigning infrastructure as necessary to improve child outcomes
- ▶ The SSIP is a multi-year, achievable plan that:
 - Increases capacity of early intervention programs to implement, scale up, and sustain evidence-based practices
 - Improves outcomes for children with disabilities (and their families)

5

California's Part C State-identified Measurable Result

Increase the percentage of infants and toddlers with disabilities in California who will substantially increase their rate of growth in positive social-emotional skills (including social relationships) by the time they exit the early intervention program.

6

Local Implementation Teams 3 Cohorts

- ▶ Each regional center catchment area has a Local Implementation Team:
 - Representatives from: Regional Center, Family Resource Center, Local Educational Agencies, providers and other community partners (ex: First 5, Early Head Start, County Office of Mental Health)
- ▶ Cohort 1 – Implemented in 2016:
 - Far Northern Regional Center, San Diego Regional Center, Valley Mountain Regional Center, Eastern Los Angeles Regional Center, Alta California Regional Center
- ▶ Cohort 2 – Implemented in 2017:
 - Kern Regional Center, Central Valley Regional Center, San Andreas Regional Center, Regional Center of Orange County, Inland Regional Center, South Central Los Angeles Regional Center
- ▶ Cohort 3 – All other regional centers implemented in October 2018

7

Outreach and Training Materials/ Personnel Development



Parent/Provider Education

- ▶ “Take a Minute” Campaign
 - Brochure for parents and providers; video to help providers use brochure with families
 - Includes information on social-emotional development and practical tips for families
- ▶ List of family-centered practices for providers
 - “Provider tips” of best practices in family-centered intervention

9

Professional Development

- ▶ Develop Community of Practice
 - Activate an online Community of Practice to support role-specific networking and support
 - Provide SSIP Cohort implementers with dedicated support sessions
- ▶ Modification of Existing Training
 - Modify existing training on social-emotional development and evidence-based practices to be more accessible
 - Make all trainings and materials available via an online Community of Practice

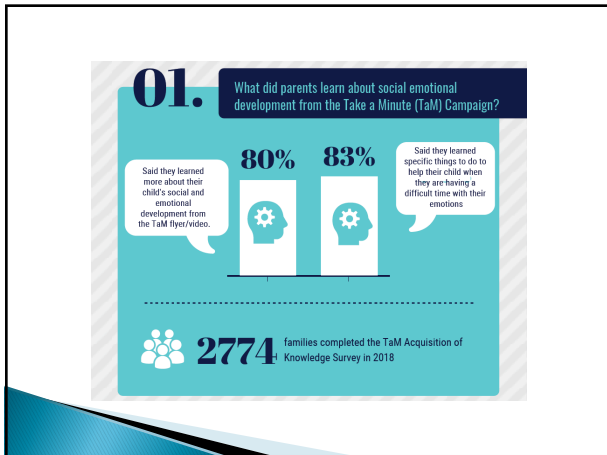
10

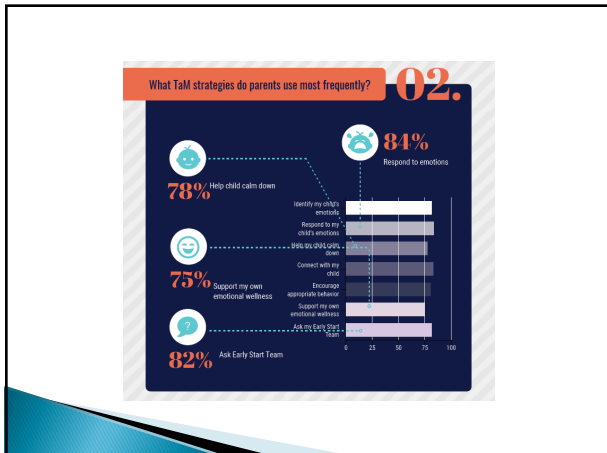
Interagency Collaboration

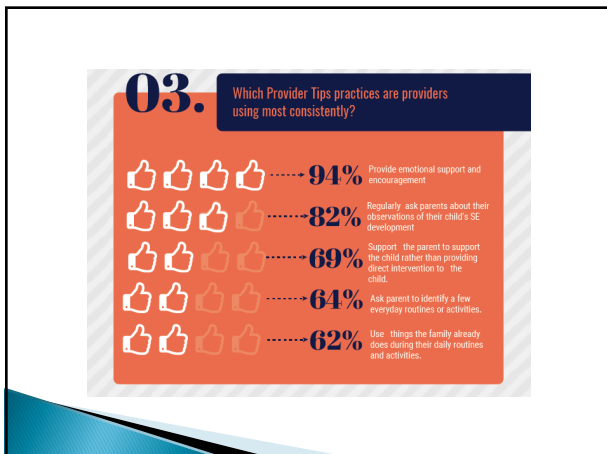
- ▶ Resource guide on statewide initiatives addressing social-emotional development
- ▶ Promotion of "Take a Minute" campaign
 - State- and local-level collaboration
 - Interagency Coordinating Council (ICC) on Early Intervention cross-agency collaboration

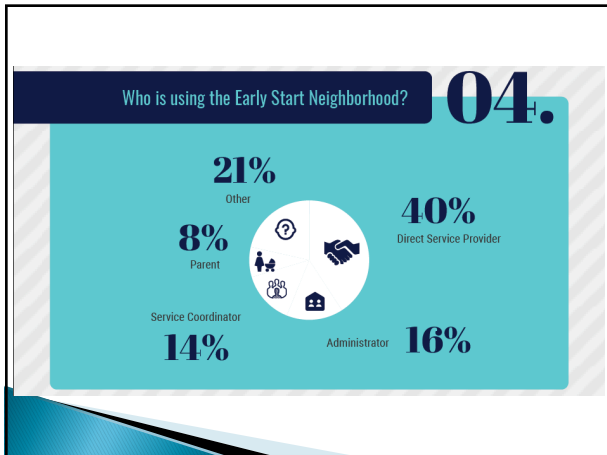
11

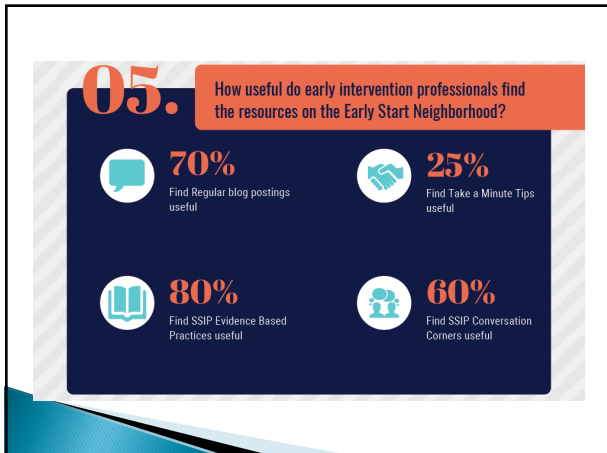
A graphic with an orange background and a large teal circle containing the number '9'. The text 'California SSIP statistics' is in a large, bold, dark blue font, with 'TO KNOW FROM 2018' in a smaller, white, sans-serif font below it. At the bottom, there is a white box with a grey border containing the text: 'Nearly 6,000 parents, providers, and administrators were surveyed on what they have learned from the SSIP and how they have applied those knowledge and skills in 2018. Here is what we learned:'

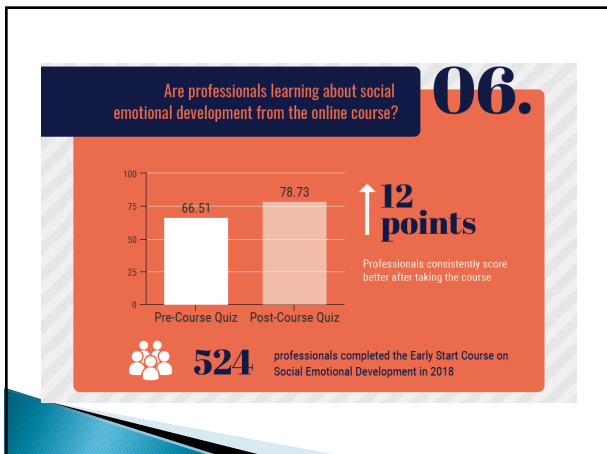


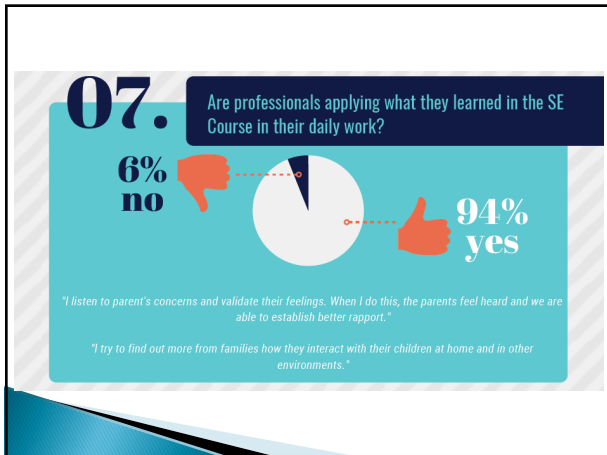








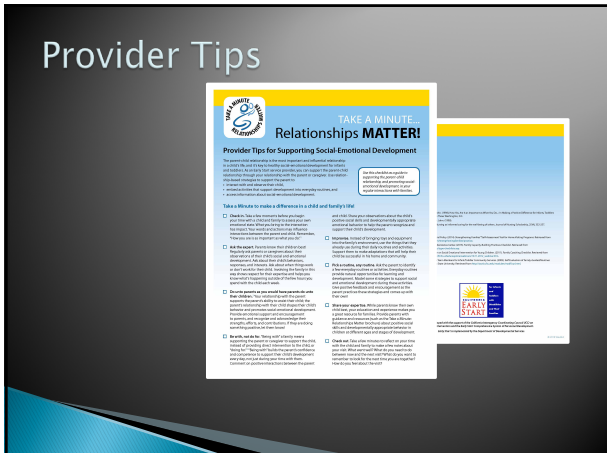


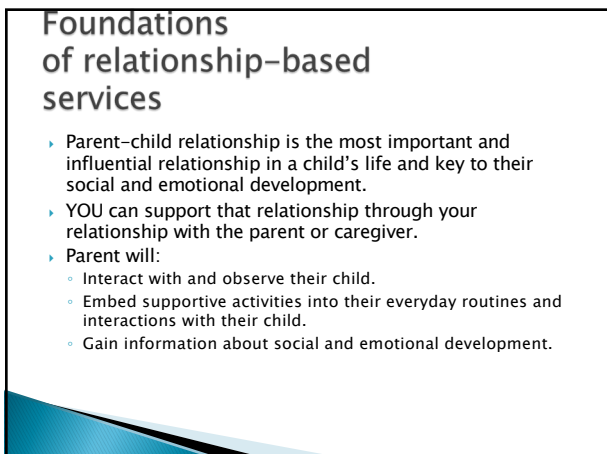










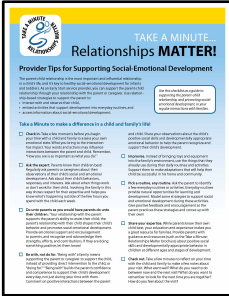


Check in

Ask the expert

The 'Platinum Rule'

Be with...



Improvise

Routines

Share your expertise

Check out

Training to Support the Use of the Provider Tips

ESPS 2017

Fall 2017
Winter 2018

Spring 2019

- Breakout session at the Early Start Partners Symposium by R Larson and A McGuire
- Available online and via binder to RC managers leading local SSIP efforts
- Available via Early Start Online Open Access

2019 Focus for DDS

- ▶ Improve compliance and child performance outcomes
- ▶ Improve data collection and data quality

Partnerships

- ▶ California Department of Education
 - Collaborative Monitoring and Services
 - State Leadership Team to begin to build a statewide system to support providers serving children birth to age five on how to address challenging behaviors and reduce suspension and expulsion.
 - Preschool Development Grant Stewardship Team
 - Analyze system to maximize the availability of high-quality early learning and care options for low-income and disadvantaged families

28

Partnerships (cont.)

- ▶ Regional Centers
- ▶ Home Visiting (HV) State Interagency Team (SIT) Workgroup
- ▶ Statewide Screening Collaborative
 - Emphasis is outreach to primary care physicians

29

SSIP Resources

- ▶ Available on the Early Start Neighborhood
- ▶ www.earlystartneighborhood.ning.com/ssip

30
